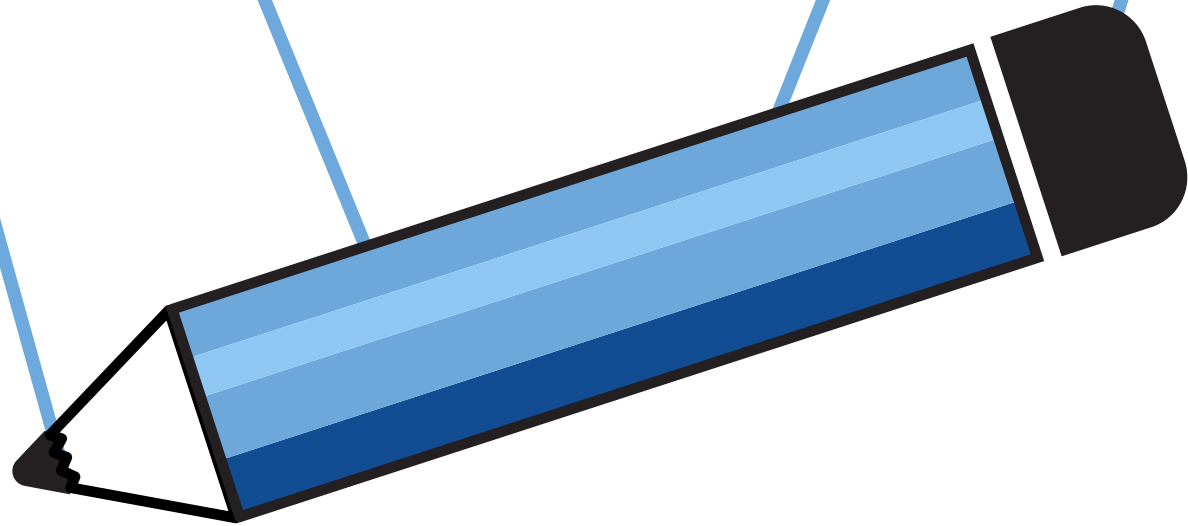


LEAD BY EXAMPLE

# STRING THEORY

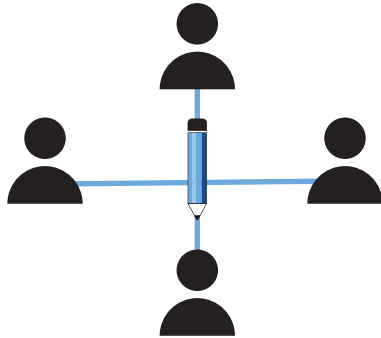


BELIEVE IN YOU

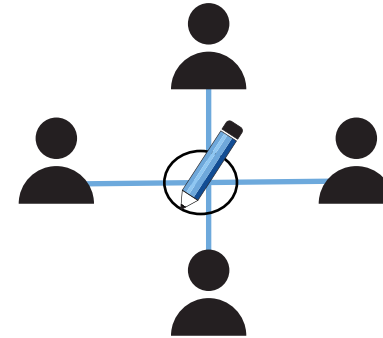
## THE OBJECT OF THE GAME IS TO WORK TOGETHER AS A TEAM TO WRITE THE LEADERSHIP VOCABULARY WORD.

Each teammate will hold a string connected to the marker. On "GO!" you will work together to move the marker (Using only the strings) to write a word on the paper.

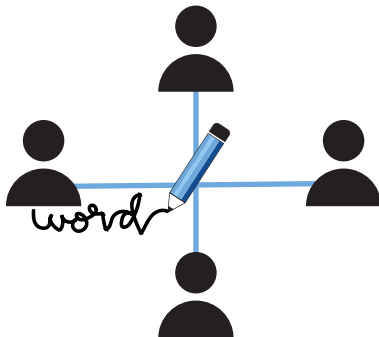
**STEP 1** Connect 1 string per teammate to your team's marker or pencil.



**STEP 2** Practice drawing 3 shapes on your Team's paper (Straight line, Circle, Triangle)



**STEP 3** The Activity leader will call a vocabulary word. On the start signal, all teams will begin writing the word.



The first team to complete the word  
Accurately scores 2 points.

All teams who complete the word  
Accurately score 1 point.

# ALIGN

(Verb)

To unite.  
To come together  
in agreement.

---

**In this activity, why is it important for everyone to align?**  
What communication strategies helped you align as a team?  
How did your efforts improve as a result of your alignment?

# DIRECTION

(Noun)

The guidance of an individual, team, or community.

---

**As a team, where did you find direction during this activity?**  
 How is communication related to finding direction as a team?  
 How is compromise related to finding direction as a team?

# EFFORT

(Noun)

The actions and activities of a group or team, done with a common purpose.

**How is individual commitment related to a team's effort?**

How is a team's ability to align related to the overall effort?

Why is direction important to a team's ability to commit and align to the overall effort?